



February 19, 2022

Meeting Agenda



- **Welcome**
 - Who's new and
- **ECEA Mission Goals**
- **New News**
 - Non-Profit Organization
 - Website
 - Business cards with information
- **Review of Xcel's Colorado Power Pathway Project**
 - Project Plan and information
 - Updates to the Segment 5 area of investigation
 - Xcel Energy's Activity Schedule
- **Xcel's town hall schedule for Segment 5**
- **Discuss what is next - organizational goals**
 - Attendance to the Xcel Energy Open House
 - Add more public comments to Xcel Energy public comment forum
 - Public comments during Elbert County Commissioner public hearings
- State Representative Richard Holtorf
- **Member support**
- **Volunteer support needed**
- **Answer questions**

ECEA Mission and Objectives



Protect our community by minimizing the environmental and economic degradation from Segment 5 of the Colorado Power Pathway Project (CPPP) within Elbert County

- Maintain healthy lifestyles for our families
- Protect wildlife
- Protect our local economy
- Protect the beauty of our county
- Protect the historic Bijou Basin
- Maintain property value
- Limit the spread of big city resource requirements being built within our small county.



[Take Action](#)

Elbert County Environmental Alliance is working to protect our community and wildlife from Xcel's high voltage power lines

[Learn More](#)

Business Cards



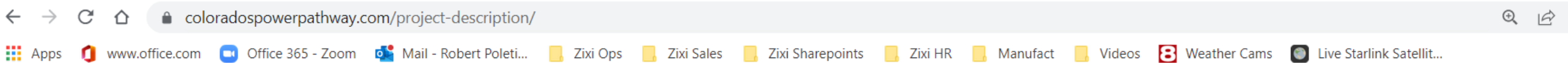
**Elbert County
Environmental Alliance**
Protect and Preserve



<https://www.ecealliance.org/>
ecenvironmentalalliance@gmail.com

Join "Save the Bijou Basin Group"
on Facebook

Xcel Energy Project Description



[Project Description](#)

[Community Engagement](#)

[FAQ](#)

[Events](#)

[Library](#)

[Contact Us](#)

[Home](#) > [Project Description](#)

Colorado's Power Pathway

Colorado's Power Pathway is a \$1.7 to \$2 billion investment proposed by Xcel Energy to improve the state's electric grid and enable future renewable energy development around the state. Colorado's Power Pathway will increase electric reliability, boost the regional economy and create jobs during construction.

While routes for the transmission lines have yet to be determined, we estimate the system will span more than a dozen counties, primarily in eastern Colorado, and include:

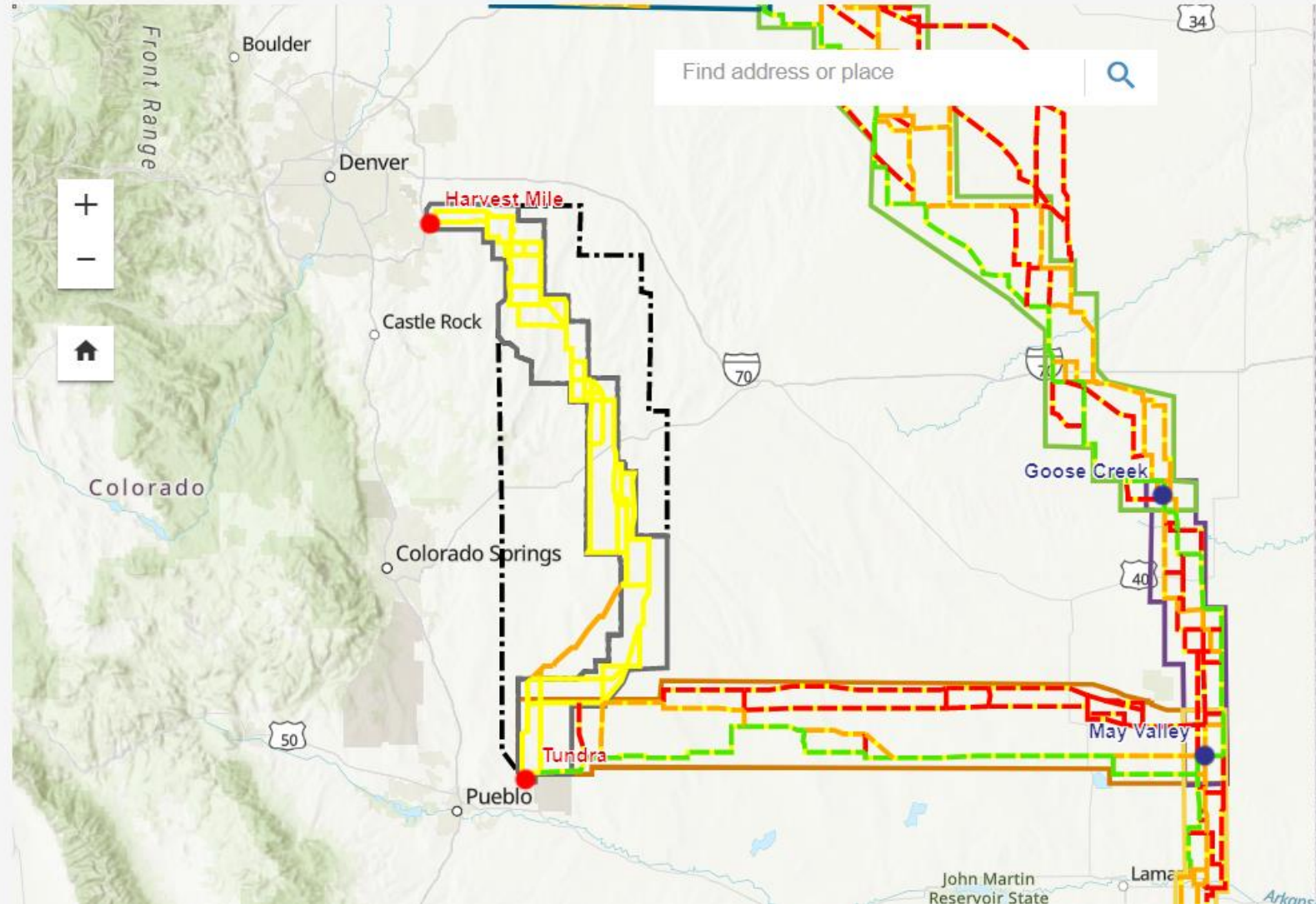
- Approximately 560 to 650 miles of new double-circuit transmission line
- Four new and four expanded substations
- First segments in-service by 2025, with other segments complete in 2026 and 2027

www.Coloradospowerpathway.com

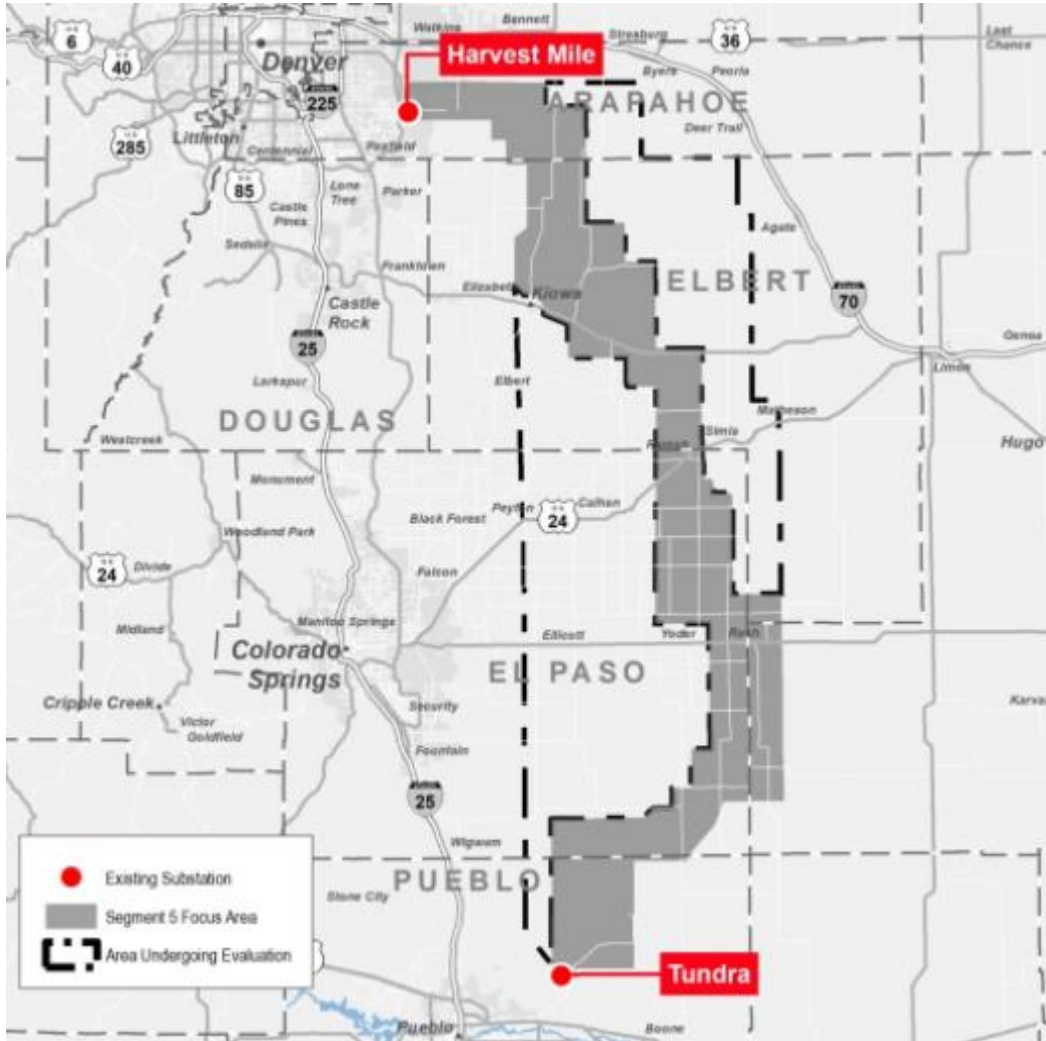


Project Description

Community Engage

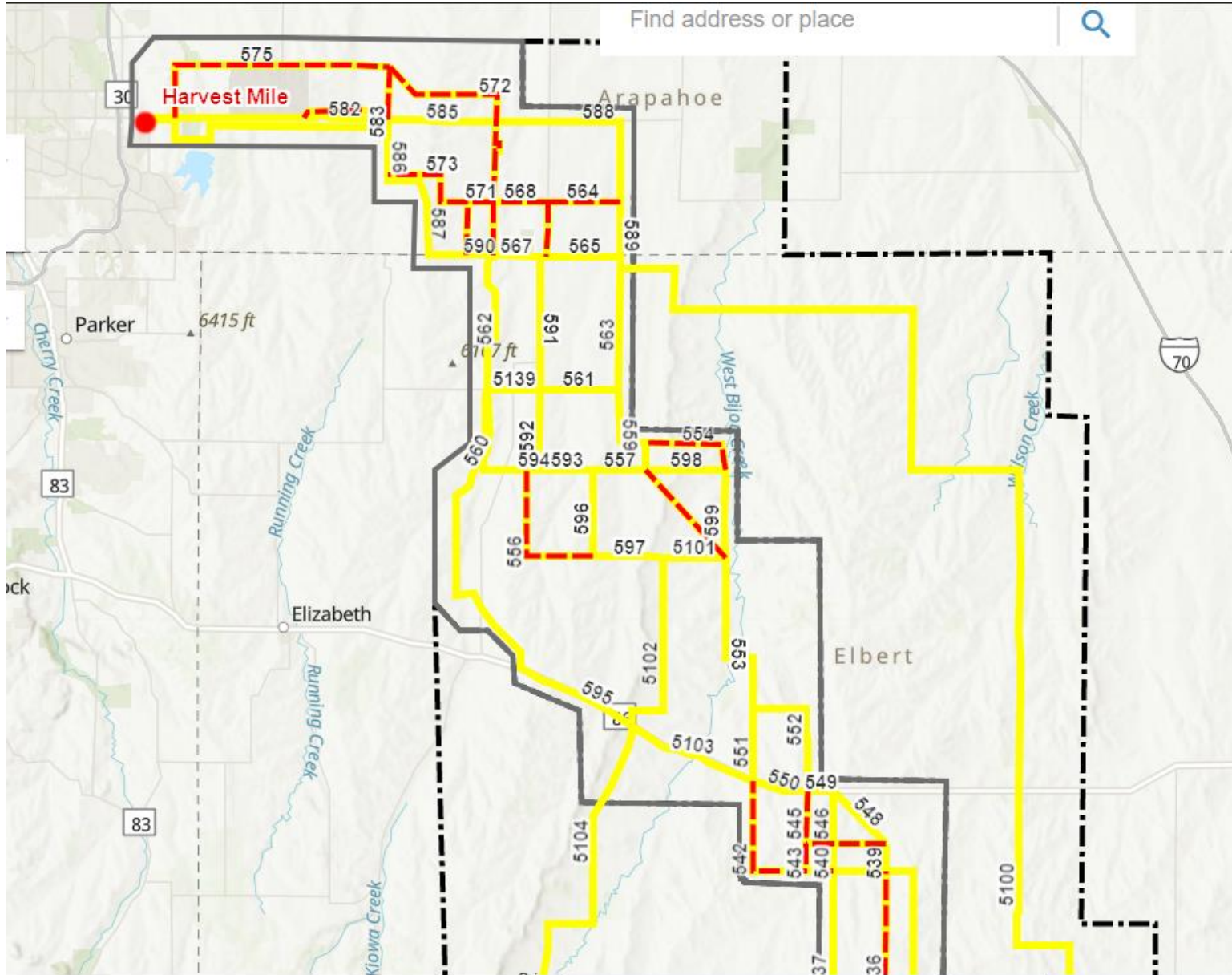


Xcel's Colorado's Pathway Project Segment #5



- **Endpoints:** Tundra Substation, Harvest Mile Substation
- **Counties in Study Area:** Arapahoe, El Paso, Elbert, Pueblo, Douglas
- **Schedule**
 - Current Activities: Routing and Siting Studies
 - Permitting: 2022-2023
 - Construction: 2025-2027
 - In-service: 2027

Elbert County Detail



Legend

Existing Substation To Be Expanded



Substation Siting Area



Preliminary Transmission Route Link Status

Preferred Transmission Route Link

Alternative Transmission Route Link

Eliminated Transmission Route Link

Preliminary Transmission Route Link



Elbert County Detail (cont'd)

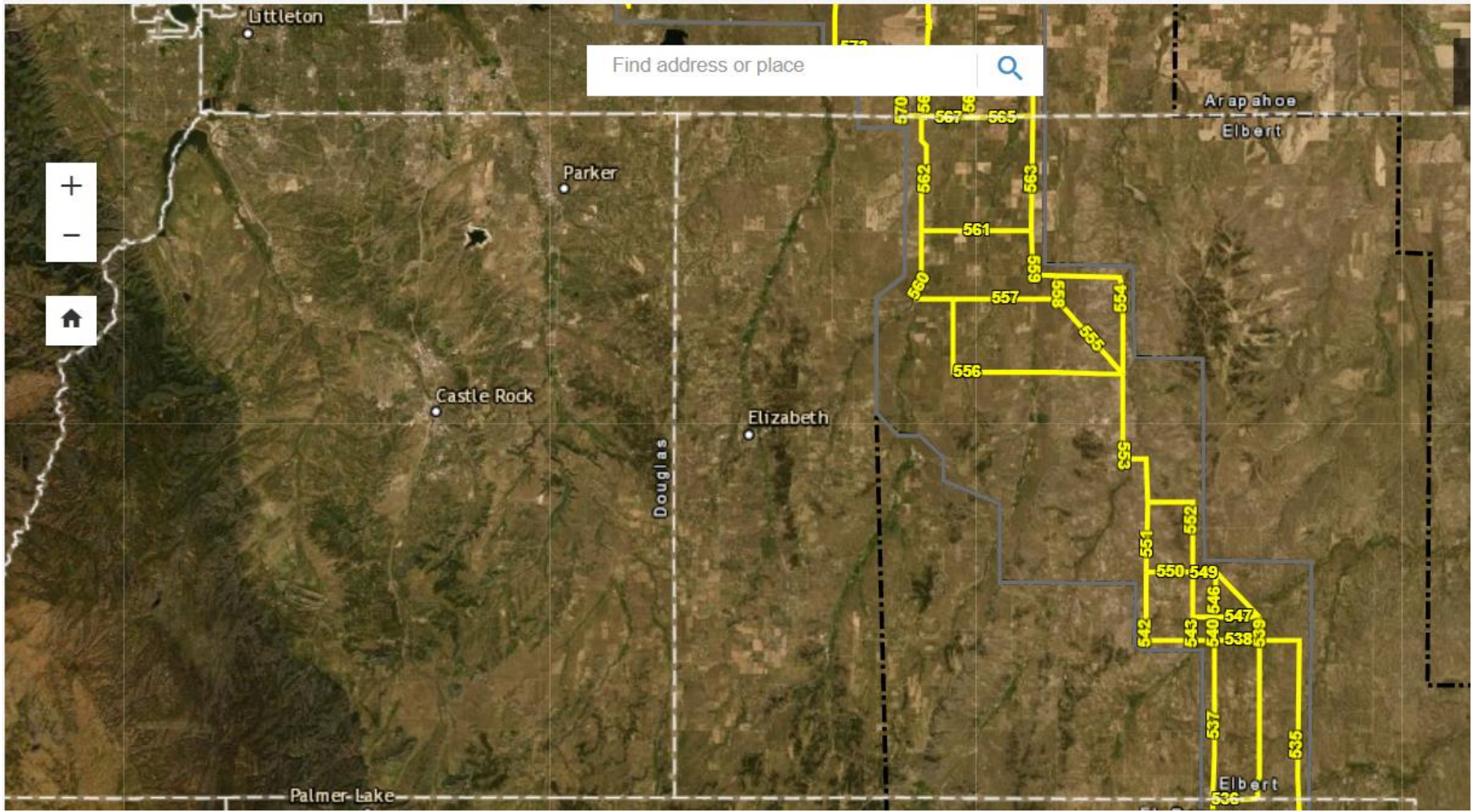


Project Description

Community Engagement

FAQ

Ever



Xcel Energy Schedule of Activities



[Project Description](#)

[Community Engagement](#)

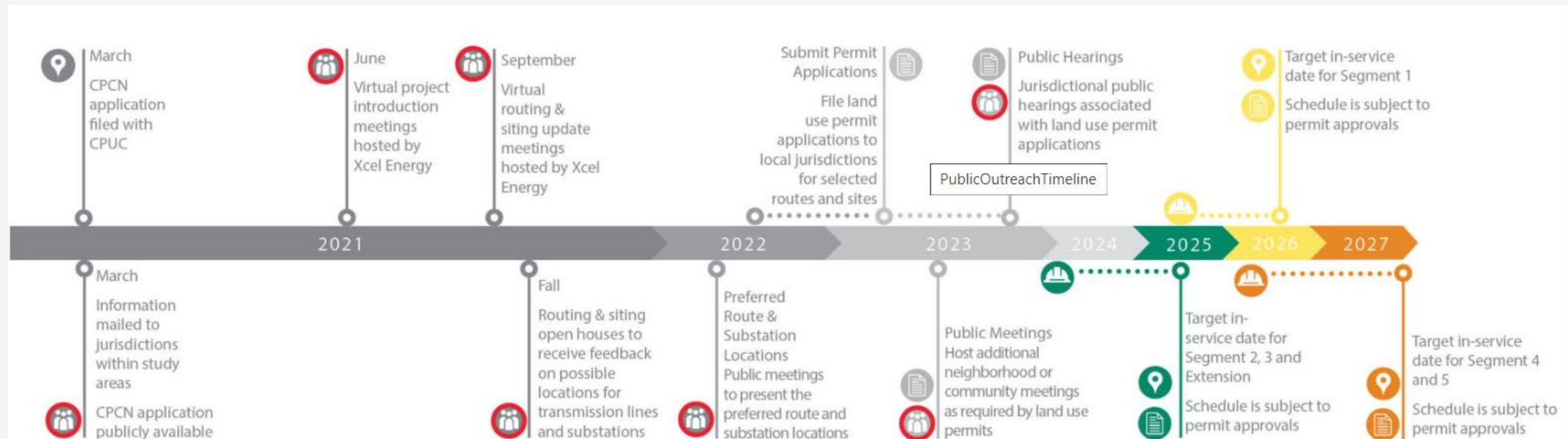
[FAQ](#)

[Events](#)

[Library](#)

[Contact Us](#)

Schedule of Activities



Power Generation Possibilities?



[Project Description](#)

[Community Engagement](#)

[FAQ](#)

[Events](#)

[Library](#)

[Contact Us](#)

▶ **How close will the powerlines be built to a house and what will you do with existing buildings along the route?**

▶ **What does the siting process entail?**

▼ **If the transmission line crosses my property, will wind turbines or solar panels also be placed there?**

Wind and solar farms, as well as all other forms of electricity generating facilities, require substations and transmission lines to move energy to areas where it is consumed. If you have a transmission line on the property, the likelihood of a wind farm developing nearby is greater. While the transmission line traversing your property does not guarantee you will be offered the chance to participate in a renewable energy project, it does increase the chance due to the transmission line being on your property.

▶ **What are Xcel Energy's goals for using renewable resources for the state's power generation?**

Renewable Energy Facts



- Introduce Kindra Snow-McGregor

Is Clean Energy really “Clean” or Renewable?

Some folks in the current administration defines renewables as follows:

“(11) RENEWABLE ENERGY GENERATION.—The term ‘renewable energy generation’ means electricity created by sources that are continually replenished by nature, such as the sun, wind, and water.

Is this a correct assessment? **NO.**

A Solar Panel nor a Wind Turbine cannot regenerate itself and they both lead to massive amounts of landfill waste at end of life (in the case of solar panels, the waste is classified as hazardous due to the levels of heavy metals, lead and cadmium).

Keep in mind - 20 years is estimated their useful life cycle.....half that of all other generation technologies

Renewables End of Life

Disposal of Wind Turbine and Solar Panels = significant landfill issue

Table 4. Disposal and recycling strategy * [48].

Material Type	Disposal Method
Iron	90% Recycling
Fiberglass	100% Landfill
Oil	100% Combusted
Plastic PVC	100% Landfill
Aluminum	55.1% Recycling
Steel	90% Recycling
Copper	90% Recycling
Concrete	100% Landfill

* Assumption that an onshore foundation (concrete and ferule) is covered and left on the ground.



Fragments of wind turbine blades await burial at the Casper Regional Landfill in Wyoming.
Photographer: Benjamin Rasmussen for Bloomberg Green

Solar Panels EOL

- By 2050 IREA projects up to 78 million metric tonnes of solar panels will have reached their end of life
- By then the world will be generating ~6 million metric tonnes annually

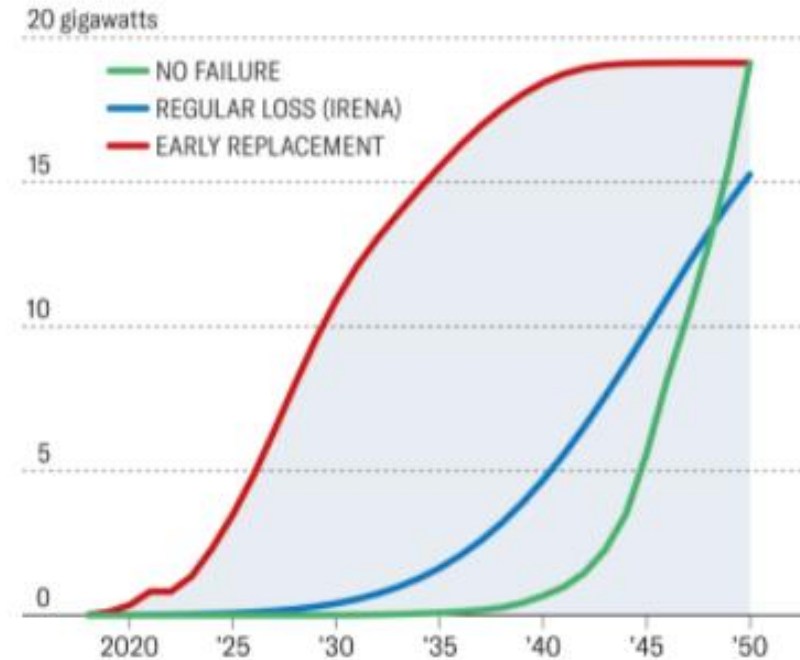


Maharashtra, India, 2014 DIPAK SHEELARE

The Solar Trash Wave

According to our research, cumulative waste projections will rise far sooner and more sharply than most analysts expect, as the below graph shows. The green "no failure" line tracks the disposal of panels assuming that no faults occur over the 30-year life cycle; the blue line shows the official International Renewable Energy Agency (IRENA) forecast, which allows for some replacements earlier in the life cycle; and the red line represents waste projections predicted by our model.

Cumulative capacity



Source: International Renewable Energy Agency, Electricity Data Browser, Global Solar Atlas

Xcel's Open House Elbert County



[Project Description](#)

[Community Engagement](#)

[FAQ](#)

[Events](#)

[Library](#)

[Contact Us](#)

TUE

1

March 1 @ 3:00 pm - 7:00 pm

Elbert County Fairgrounds Public Open House, Exhibit Building

Elbert County Fairgrounds 95 Ute Ave, Kiowa, CO

Xcel Energy continues to make progress identifying potential locations for Colorado's Power Pathway. Please join us at one of our upcoming in-person public open houses to provide input about our revised transmission line routes and substation site options. Project staff ... Continued

Xcel Energy Public Comment Form

← → ↻ 🏠 coloradospowerpathway.com/public-comment/ 🔍

📱 Apps 🌐 www.office.com 🗣️ Office 365 - Zoom 📧 Mail - Robert Poleti... 📁 Zixi Ops 📁 Zixi Sales 📁 Zixi Sharepoints 📁 Zixi HR 📁 Manufact 📁 Videos 📺 Weather Cams 📡 Live Starlink Satellit...



[Project Description](#) [Community Engagement](#) [FAQ](#) [Events](#) [Library](#) [Contact Us](#)

Public Comment Form | COLORADO'S POWER PATHWAY

Please take a few minutes to provide your comments or questions about Colorado's Power Pathway. You can leave your completed form with us at a public open house or mail by March 17, 2022. Thank you.

Please check the following topics that are important to you for this project

Purpose and Need

Location of Transmission Line

Location of Substation

Renewable Energy

Organizational Action Items & Goals



Create an organization to grow and inform our members and use that collective voice to ensure this proposed pathways project does not destroy our community and the wildlife in Elbert County.

Key tasks:

- Inform the community about this project and the impacts
- Grow membership to help fight this proposal
- Coordinate with County Commissioners regarding citizens' expectations
- Update the Elected Officials with local citizens' concerns about the Xcel project

Next 30 to 60 days:

- Request Elbert County Commissioners to have Xcel commission a third-party environmental impact study
- Ensure our voice is heard at Elbert County Commissioners meetings, Xcel's open house and public comment forms

Member Support



- Share what is going on and help generate more members
 - Hand out business cards
- Attend our membership events/meetings
 - Get updates and action items for the ECEA
- Attend Xcel events and voice concerns
- Submit comments to Xcel Energy
- Submit comments to Colorado Public Utilities Commission
- Attend and submit public comments at the Elbert County monthly Commissioner Meetings
- Submit comments to all your elected government representatives!

Guest Speaker

REPRESENTATIVE

Richard Holtorf



OCCUPATION:

PARTY: Republican

Committee Assignments

Agriculture, Livestock, & Water

Public & Behavioral Health &
Human Services



CONTACT INFORMATION

MAILING ADDRESS

200 E Colfax


RM 307

Denver, CO 80203

United States

CAPITOL PHONE

303-866-2398

Email 



Questions?

Remember to sign in. . . .

- Contact information will be used to:
 - Provide timely updates
 - Mailers

Links



- Xcel website on the project:

<https://www.coloradospowerpathway.com/>

- ECEA:

<https://www.ecealliance.org/>

Join the “Save the Bijou Basin” Group on Facebook



Useful Contact Information



Elbert County Commissioners

Grant Thayer	303-621-3114	grant.thayer@elbertcounty-co.gov
Rick Pettitt	303-621-3139	Rick.Pettitt@elbertcounty-co.gov
Chris Richardson	303-621-3132	chris.richardson@elbertcounty-co.gov

To find agendas and minutes of county meetings:
<https://elbertcounty-co.gov/129/Agendas-Minutes>

Colorado Public Utilities Commission
dora_puc_website@state.co.us
In the subject line: Xcel Colorado Power Pathway Proceeding #21A-0096E

Xcel
Coloradospowerpathway.com

The image shows a business card for Tom Henley, Area Manager for Community and Local Government Affairs at Xcel Energy. The card includes the Xcel Energy logo, his name and title, contact information (phone, mobile, and email), and the address: 2070 South Valentia Street | Denver, CO 80231. The website xcelenergy.com is also listed at the bottom.

Tom Henley
*Area Manager,
Community and Local Government Affairs*

tom.henley@xcelenergy.com p: 303.671.3901
m: 720.333.1844

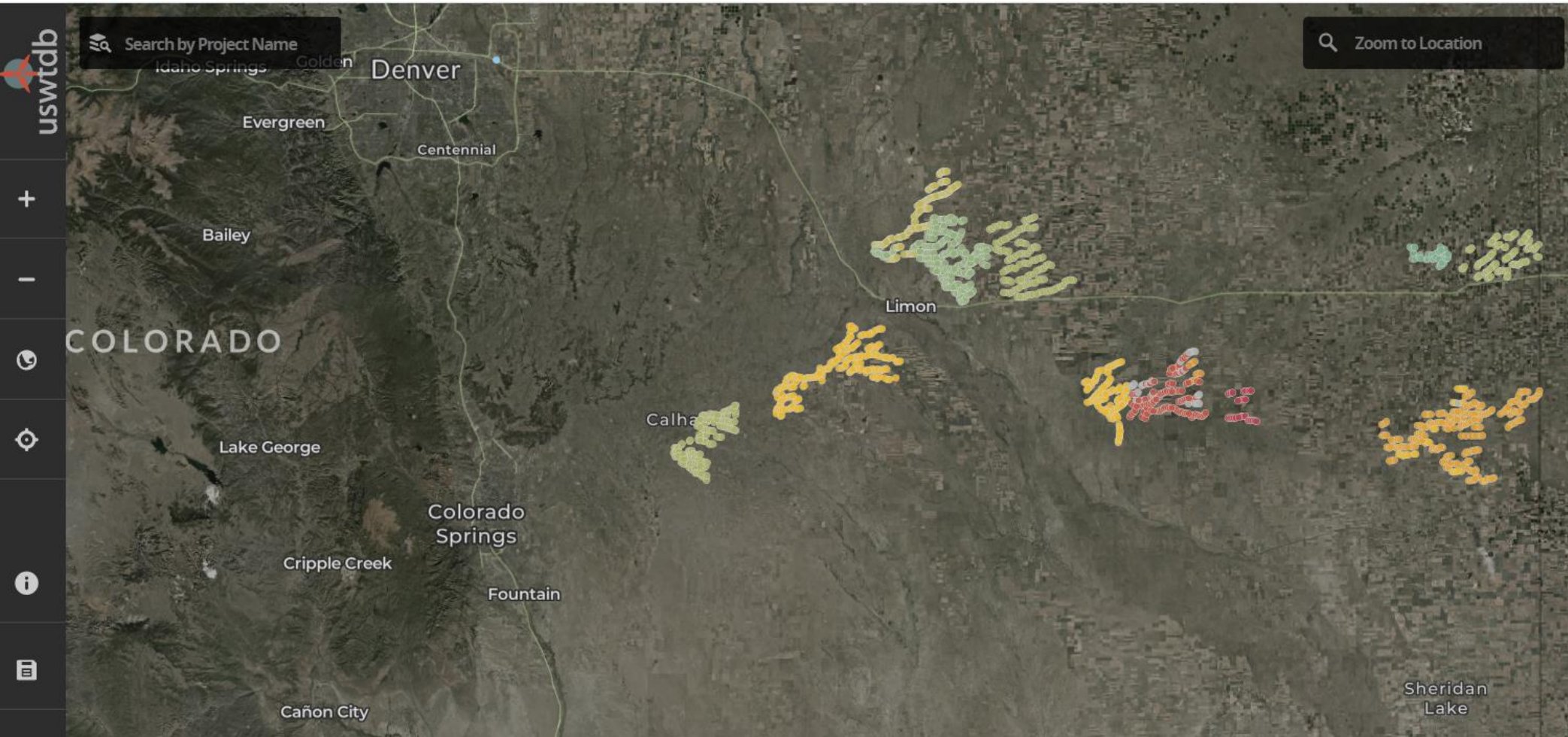
2070 South Valentia Street | Denver, CO 80231
xcelenergy.com

Additional Information



- USGS Wind Turbine Database & Information
- HB22-1104
- HB21-072

USGS Wind Turbine Database & Information



USGS science for a changing world

BERKELEY LAB

AMERICAN CLEAN POWER

U.S. Wind Turbine Database

Database Release: January, 2022
Data Source: LBNL, USGS, ACP
Map Interface: USGS, Energy Program

The USWTDB provides onshore & offshore wind turbine locations in the United States, corresponding facility information, and turbine technical specifications. [Watch our tutorial video](#)

Showing **0** turbines on screen with a total rated capacity of **0** MW

When zoomed out, display turbine data as:
Density Heatmap Point Locations

Relative density of turbines

Low

Apply Range Filter to Turbines by:
 None Height Capacity Year

Exclude turbines with no data (0 here)

Low

Apply Color Ramp To Turbines by:
 None Height Capacity Year

Colorado HB22-1104 (Excerpt)



22 TRANSMISSION PROVIDER, AS DESCRIBED IN SUBSECTION (12)(a) OF THIS
23 SECTION, THAT IS OWNED BY A SINGLE LOCAL GOVERNMENT.

24 **33-45-103. Powerline trails - written contracts - informational**
25 **resources.** (1) A TRANSMISSION PROVIDER, AS THE OWNER, OCCUPANT,
26 OR LESSEE OF A TRANSMISSION CORRIDOR OR THE HOLDER OF AN
27 EASEMENT OR RIGHT-OF-WAY COVERING A TRANSMISSION CORRIDOR, MAY

1 ENTER INTO A WRITTEN CONTRACT WITH A PUBLIC ENTITY OR PRIVATE
2 LANDOWNER TO CONSTRUCT AND MAINTAIN A POWERLINE TRAIL
3 COVERING ALL OR SOME OF THE TRANSMISSION CORRIDOR.

4 (2) IN ENTERING INTO OR AMENDING A CONTRACT DESCRIBED IN

HB21-072 Summary (Excerpt)



Sections 4 and 7 create the Colorado electric transmission authority (CETA) as an independent special purpose authority, and section 4 specifies the composition and manner of appointment of the board of directors that governs the authority. CETA is authorized to select a qualified transmission operator to finance, plan, acquire, maintain, and operate eligible electric transmission and interconnected storage facilities (eligible facilities).

Under sections 4, 8, and 9, CETA is granted various powers necessary to accomplish its purposes, including the power to:

- Issue revenue bonds;
- Identify and establish intrastate electric transmission corridors;
- Coordinate with other entities to establish interstate electric transmission corridors;
- Exercise the power of eminent domain to acquire eligible facilities; and
- Collect payments of reasonable rates, fees, interest, or other charges from persons using eligible facilities.